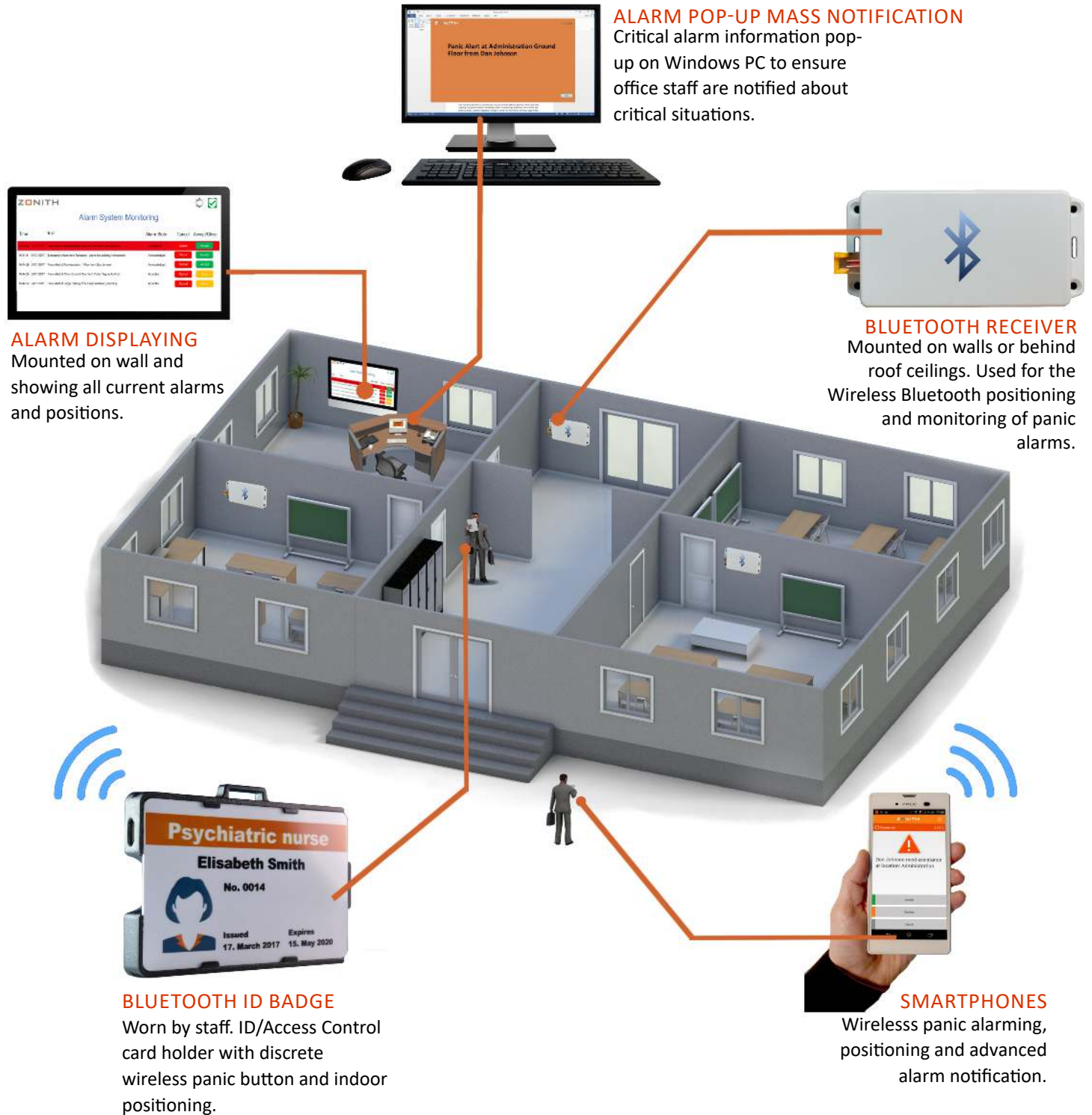


# ZONITH

## Staff Safety, Panic Alerting and Indoor Positioning



This solution is designed for working environments where staff or visitors need to be located immediately when exposed to threats, or whilst operating in lone-worker situations.

This solution also provides the end user with the ability to raise immediate, locatable panic alarms, optimising response times during any emergency.

## BLUETOOTH ID BADGE

### CLASP

The clasp secures the Bluetooth ID Badge anywhere on your person.

### ID BADGE HOLDER

Any standard ID card will work with the Bluetooth ID Badge. The design of the badge allows the ID card to slide in easily.

### WIRELESS

The badge uses standard wireless Bluetooth communication for positioning and panic alerting, or simply as a positioning device depending on the user scenario.

### PANIC BUTTON

On the back of the Bluetooth Badge you will see the strategically placed panic button. If an emergency arises, one press triggers an alarm through the Bluetooth Receiver network. Long and short press alarms can be triggered.

### POWER BUTTON

Also used to enable and disable the LED.

### HANDLE

Handle for clasp or lanyard when worn horizontally.

### LED

#### Indicating:

- Normal operation
- Alarm status
- Battery status

### HANDLE

Handle for clasp or lanyard when worn vertically.

The Bluetooth ID Badge functions as a regular ID badge, whereby standard ID cards and Access Control cards can be inserted. However, the built-in wireless Bluetooth unit and panic button on the back of the badge, allows for discrete positioning and panic alerting that takes staff safety to the next level.

The panic button is discretely and strategically located on the back of the badge. One press triggers an alarm through the Bluetooth Receiver network. This solution is perfect for anyone working alone in volatile environments, but also in situations where visitors need to be tracked and located immediately.

## WINDOWS POP-UP DISPLAY

### POP-UP MASS NOTIFICATION

When a critical alarm occurs the pop-up will notify the users on the Windows PC screen.



### CLOSING

When the alarm message is read it can be closed.

## ALARM DISPLAY

### STANDARD WINDOWS PC

Instantly showing all current alarms and their status.



### LATEST ALARM

Alarm description shown on top in clear red background to highlight the importance.

### AUDIO

Freely select audio notifications provided by the Windows PC audio output.

## FLOOR PLAN

### INCIDENT LOCATION

The red color indicates the location of the incident. In this case the Administration room.



### DETAILED INFO

Who, where and what? - displayed clearly on side bar and highlighted in red during any incident.

### GRAPHICAL

### FLOOR PLANS

Showing the position of the Bluetooth ID Badges and Android devices.

Any floorplan or other graphical image can be used. Possible to build floorplans in layers, like 1st. Floor, 2nd floor etc.

The Windows Desktop Alarm Pop-Up allows immediate mass-notification of alarms on any Windows PC. The alarm notification will pop-up on the PC screen automatically, overriding any other document or task being worked on at the time the alarm is raised.

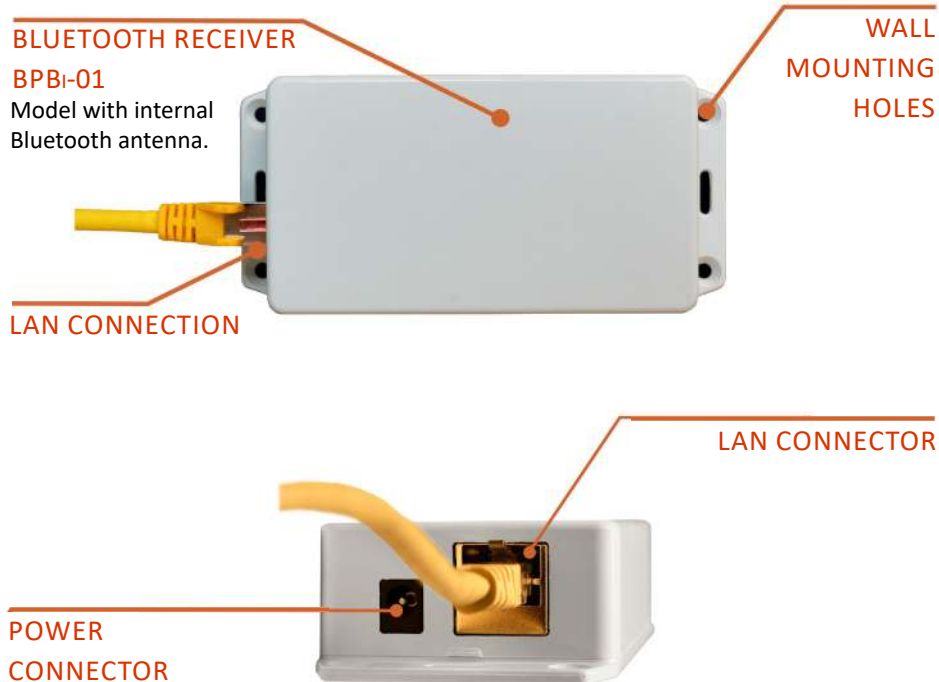
The Interactive Alarm Display shows alarm statuses on PC monitors. The monitor can be located on the wall of the office or in a security room and provides easy, visual representation and management of alarms. Not only is the alarm type and status shown, but staff can interact with the touch screens allowing alarms to be accepted, closed and cancelled, if this is desired.

Via a standard browser like Chrome, it is possible to show the exact location of any Bluetooth ID Badge or Android SmartPhone on the actual floorplan of the building. The location of the distress situation is shown with red shading.

## ANDROIDS



## BLUETOOTH RECEIVER



The backbone of the ZONITH Indoor Positioning System are the wall mounted Bluetooth Receivers. The Bluetooth Receivers can locate the ZONITH Bluetooth ID Badge, Android phones with the ZONITH Android App installed and other Bluetooth discoverable devices. The Bluetooth Receivers need to be connected to the LAN of the building.

For more information visit:

[www.bluetoothpositioning.com](http://www.bluetoothpositioning.com)

GET in touch!  
**ZONITH**

ZONITH A/S  
Gammel Kongevej 39E  
1610 Copenhagen V, Denmark

Email: [sales@zonith.com](mailto:sales@zonith.com)  
Phone: +45 3332 4530  
Web: [www.zonith.com](http://www.zonith.com)